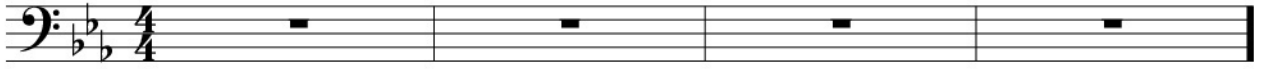


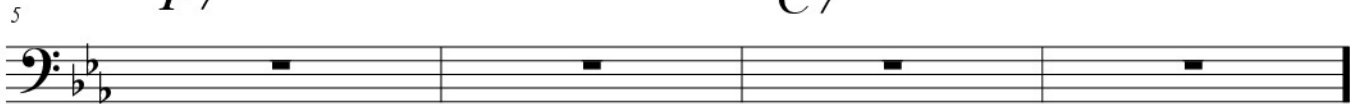
Standard-Bluesform in C

C7



F7

C7



G7

F7

C7

G7



Standard-Bluesform in C

C7

$\text{♩} = 120$

Akkorde

Walking Bass

F7 *C7*

G7 *F7* *C7* *G7*

sf

The image displays a musical score for a blues piece in C major, titled "Standard-Bluesform in C". The score is written in 4/4 time with a tempo of 120 beats per minute. It consists of two staves: "Akkorde" (Chords) and "Walking Bass". The key signature has two flats (Bb and Eb). The score is divided into three systems. The first system (measures 1-4) features a C7 chord in the upper staff and a walking bass line in the lower staff. The second system (measures 5-8) features F7 and C7 chords in the upper staff and a walking bass line in the lower staff. The third system (measures 9-12) features G7, F7, C7, and G7 chords in the upper staff and a walking bass line in the lower staff. The piece concludes with a double bar line and a repeat sign. Dynamics include accents (>) and fortissimo (sf).

Skalen zur Blues-Improvisation

C7

Pentatonik

Bluestonleiter mit #11

Bluestonleiter mit #9 & #11



F7

4



G7

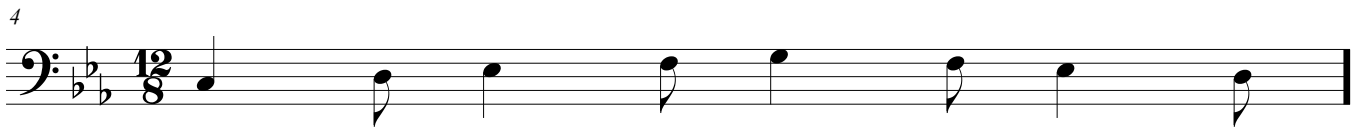
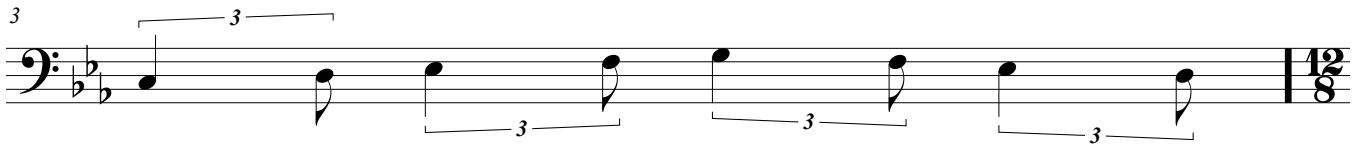
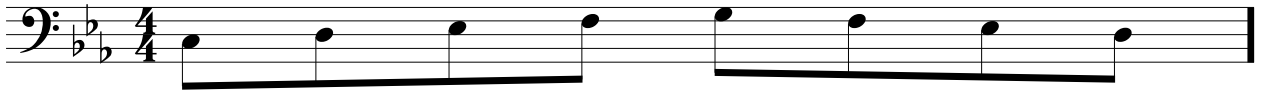
7



Swing

(Notationsvarianten)

Swing! ♩ = ♩³



Rhythmus-Pyramide

The image displays a rhythmic pyramid exercise in 4/4 time, consisting of eight staves. Each staff is labeled with a number on the left, representing the total number of notes in that staff. The time signature is 4/4, indicated by a common time signature symbol and the fraction 4/4. The exercise progresses from a single note to 24 notes, with increasing complexity and the introduction of triplets.

- Staff 1:** 1 note (half note).
- Staff 2:** 2 notes (quarter notes).
- Staff 3:** 3 notes (quarter notes), with a bracket and the number 3 indicating a triplet.
- Staff 4:** 4 notes (quarter notes).
- Staff 6:** 6 notes (quarter notes), with two brackets and the number 3 indicating two triplets.
- Staff 8:** 8 notes (quarter notes), with two brackets and the number 3 indicating two triplets.
- Staff 12:** 12 notes (quarter notes), with four brackets and the number 3 indicating four triplets.
- Staff 16:** 16 notes (quarter notes), with four brackets and the number 3 indicating four triplets.
- Staff 24:** 24 notes (quarter notes), with eight brackets and the number 3 indicating eight triplets.